

Installation Instructions TIBUS Bolt-on Portals - Cast Version - for Mercedes Benz G-Wagon

WARNING: This should be done by a skilled mechanic.

This is not a straight bolt on!

Some kind of cutting and fabrication may be required.



Preparing the rear axle for portal installation



Rear axle: Remove the brake parts and pull the axle shaft out.

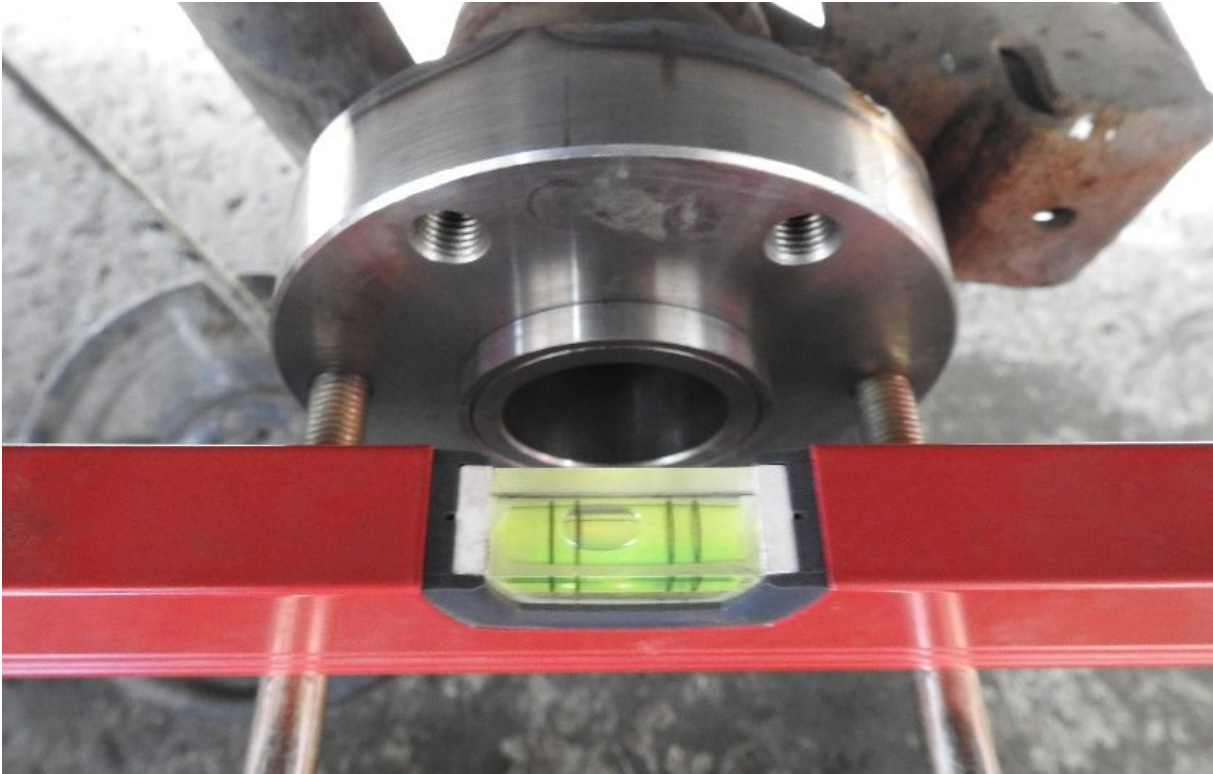




Take the adapter, apply some silicon sealant. Notice: The adapter shown is for disc brake. The adapter for drum brakes looks different.



Level the car with jacks under the axle. The axle has to be in ride height.

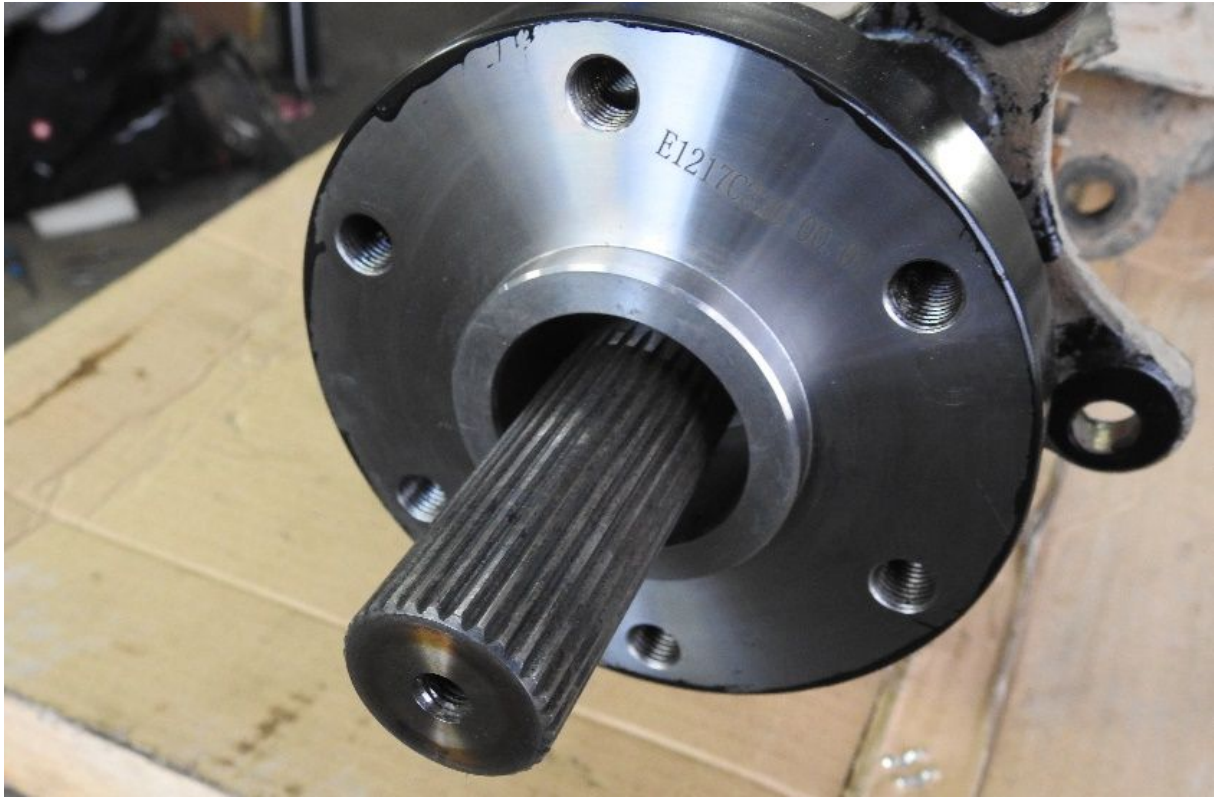


The flange has to be in the same level.

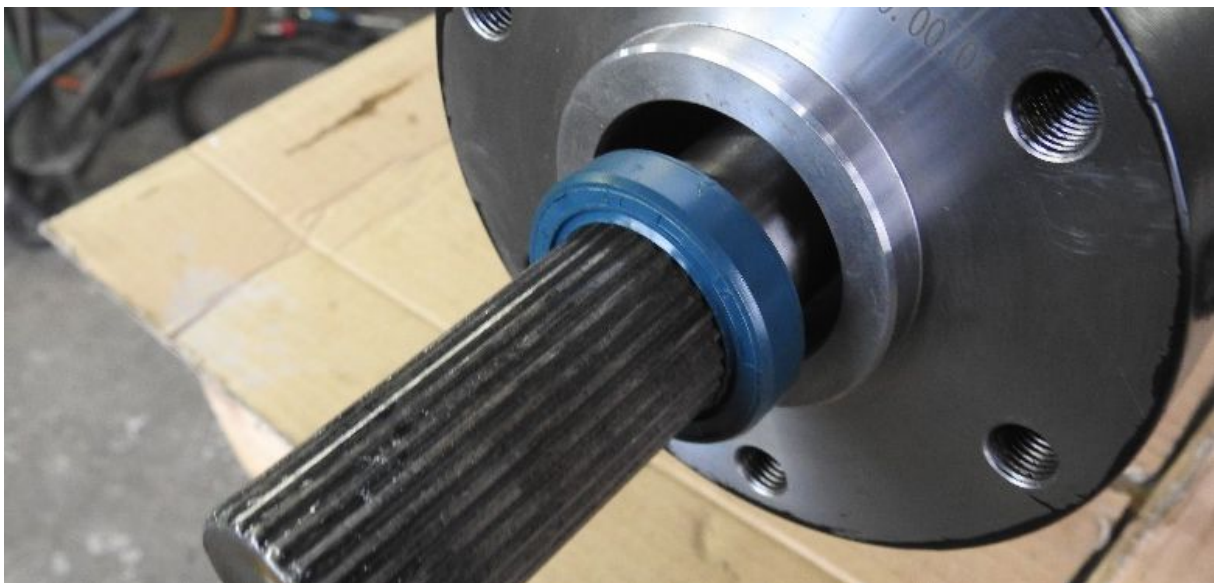




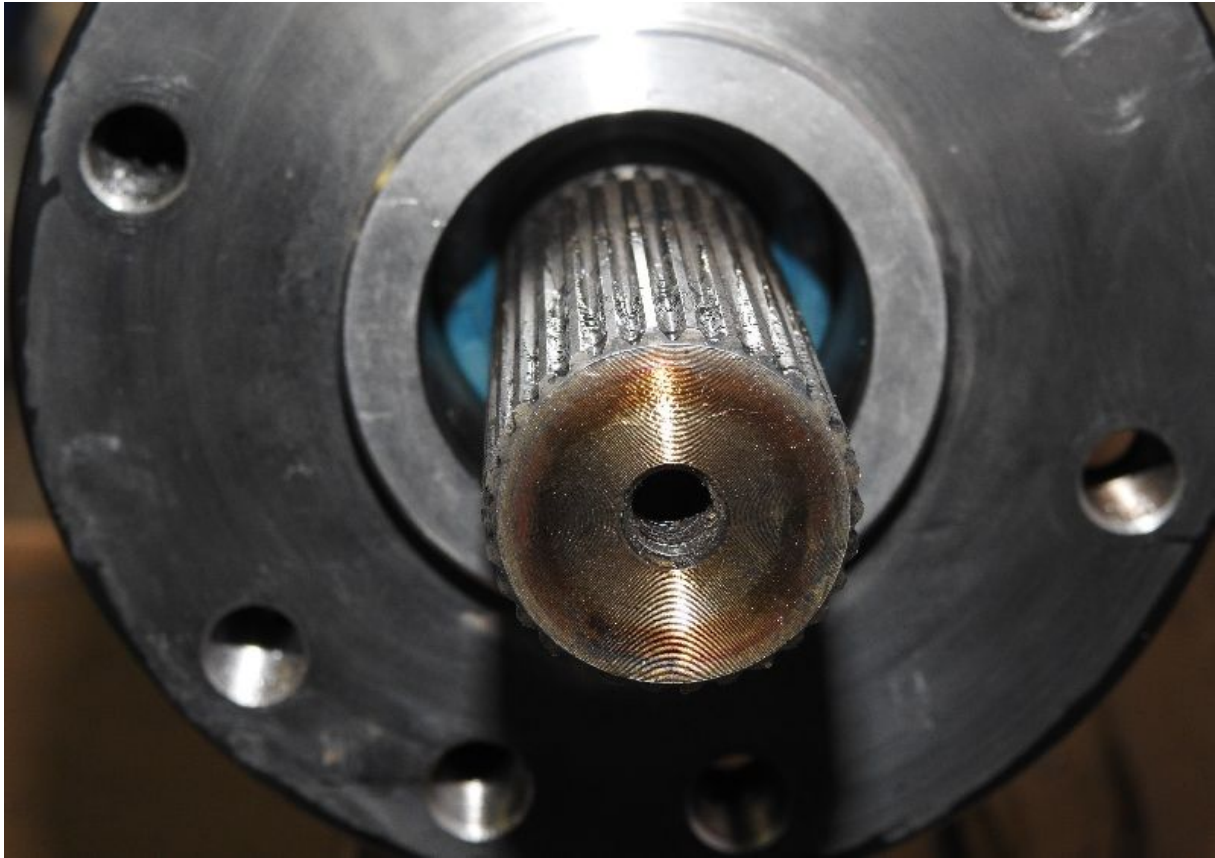
Fix the flange with clamps and weld the flange to the axle housing all around.



Stick the axle shaft in to the housing. The axle shaft should stick out not more than 65mm.



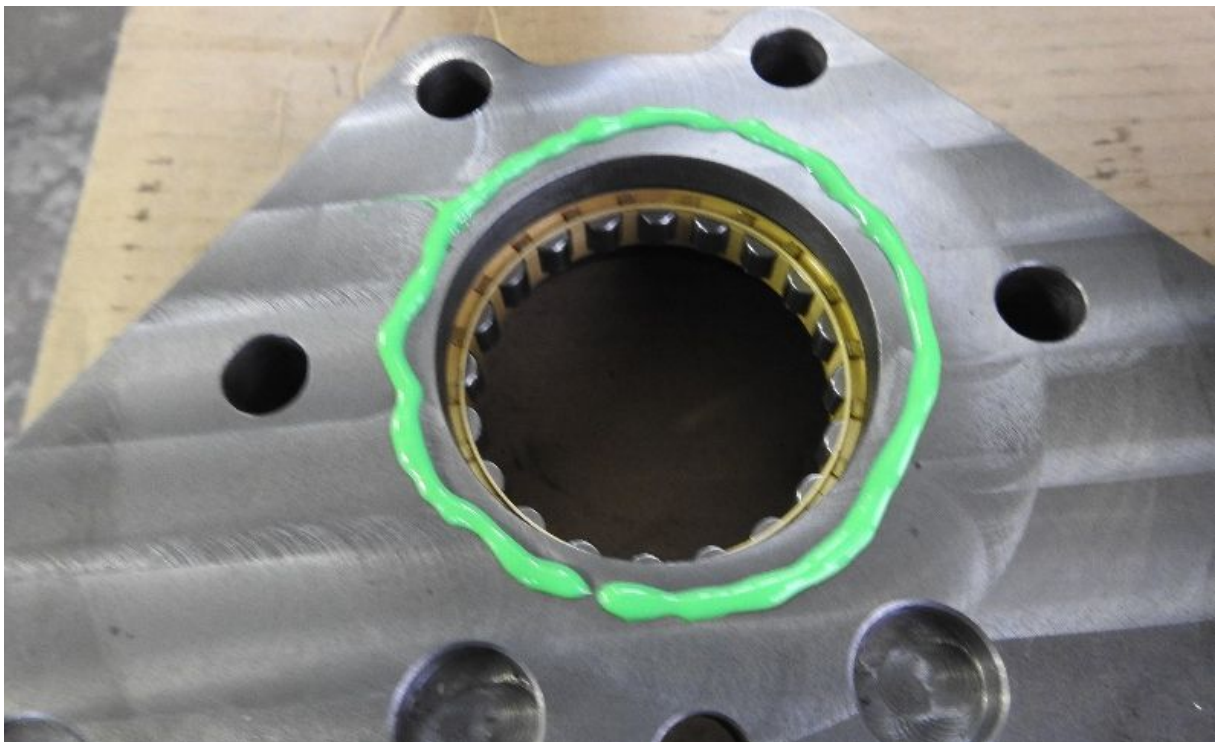
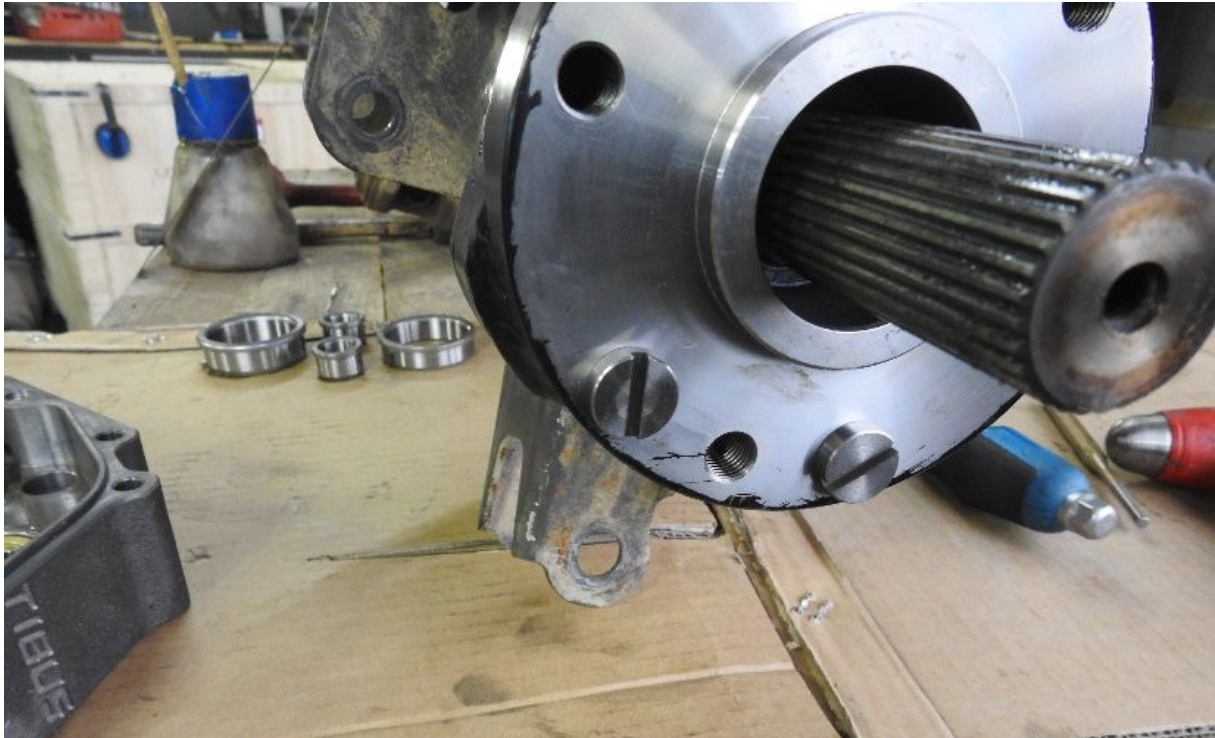
Install the seal carefully now.



Push the seal right to the end



Two of the bolts shown in the picture have to be mounted into the flange.



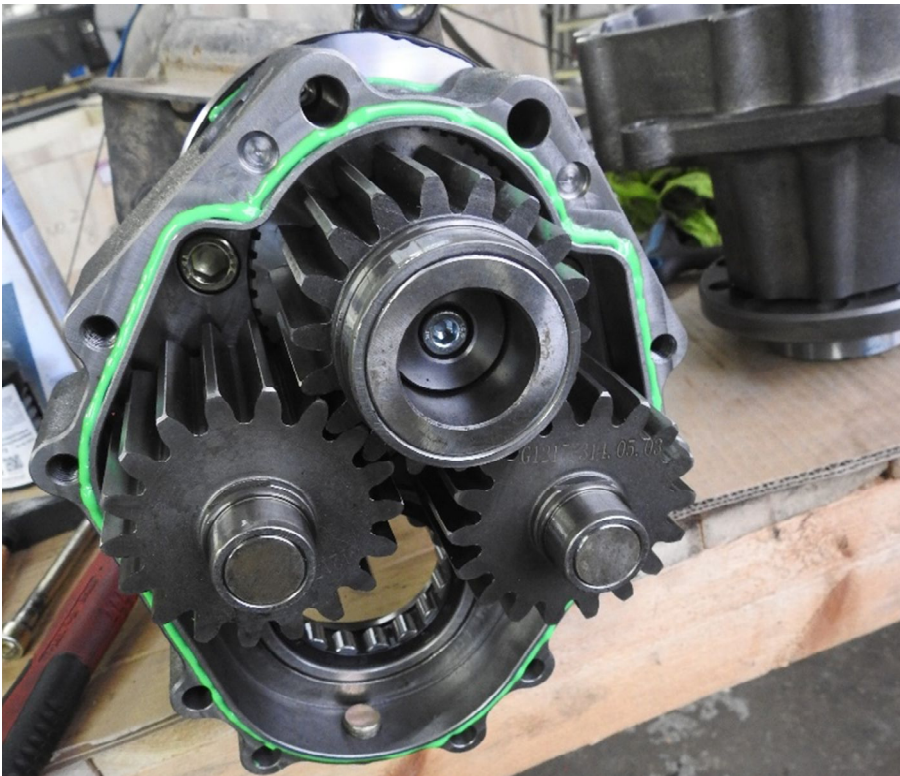
You can start to mount the rear portal housing now. Apply some sealant!



Mont the rear housing.



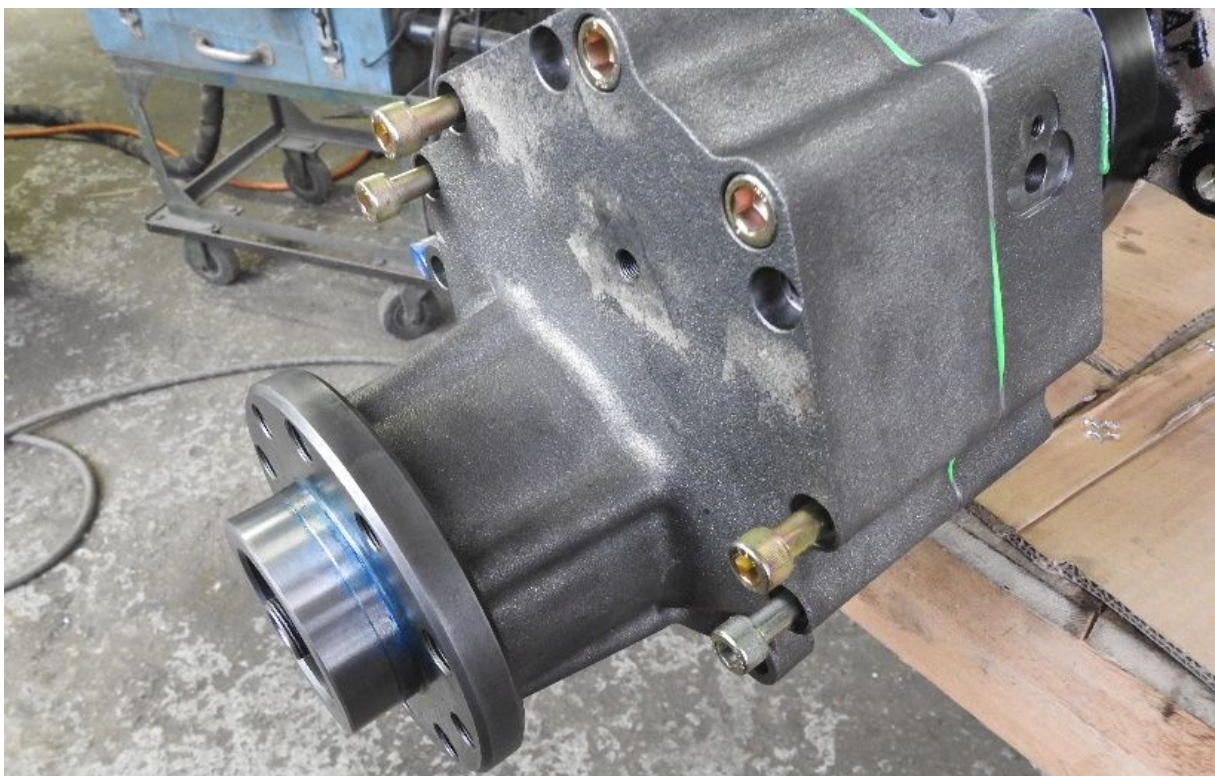
Mont the upper gear and fix the axle shaft with the provided shim and bolt.

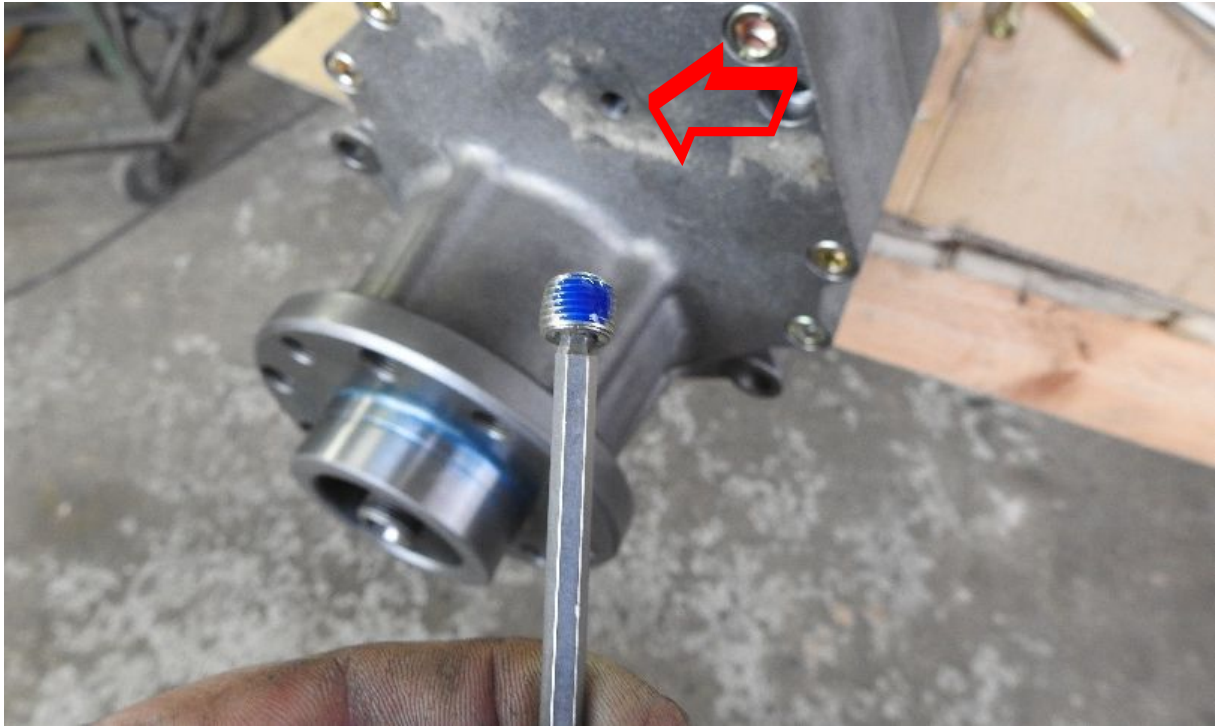


Mount the side gears now.



Now the front housing with the lower gear is ready for mounting. Carefully apply sealant all around.





Mount the plug in the center. Apply thread locker.

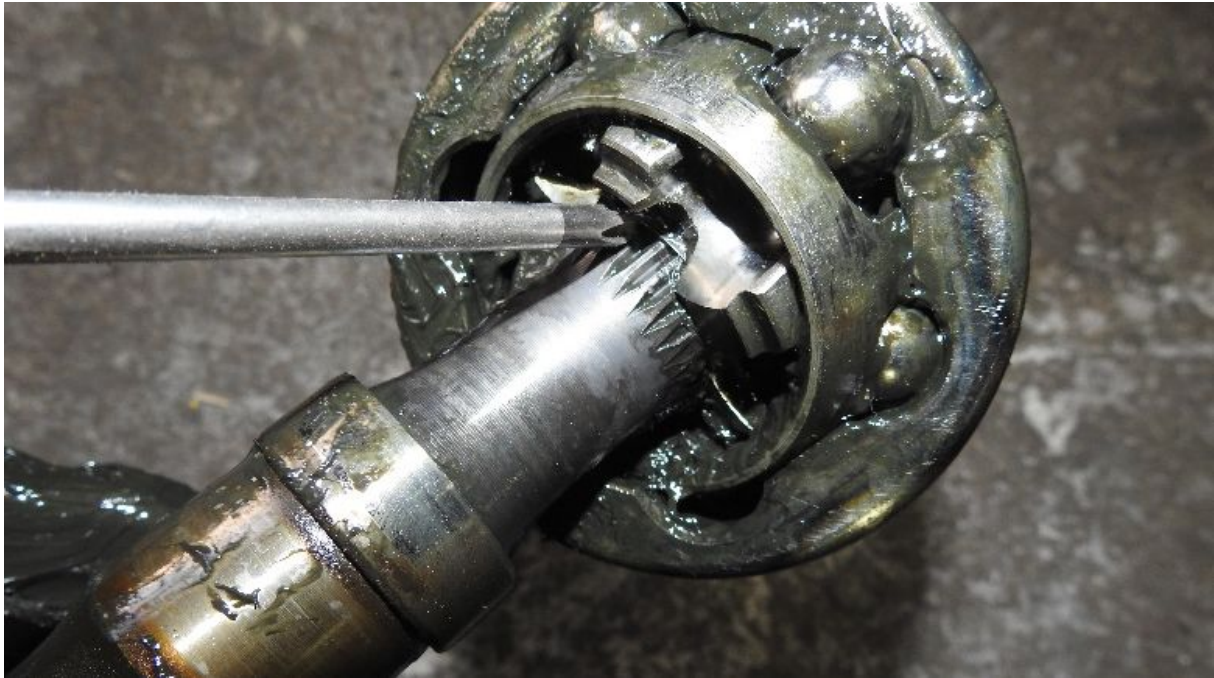
You can start the installation at the front axle now.



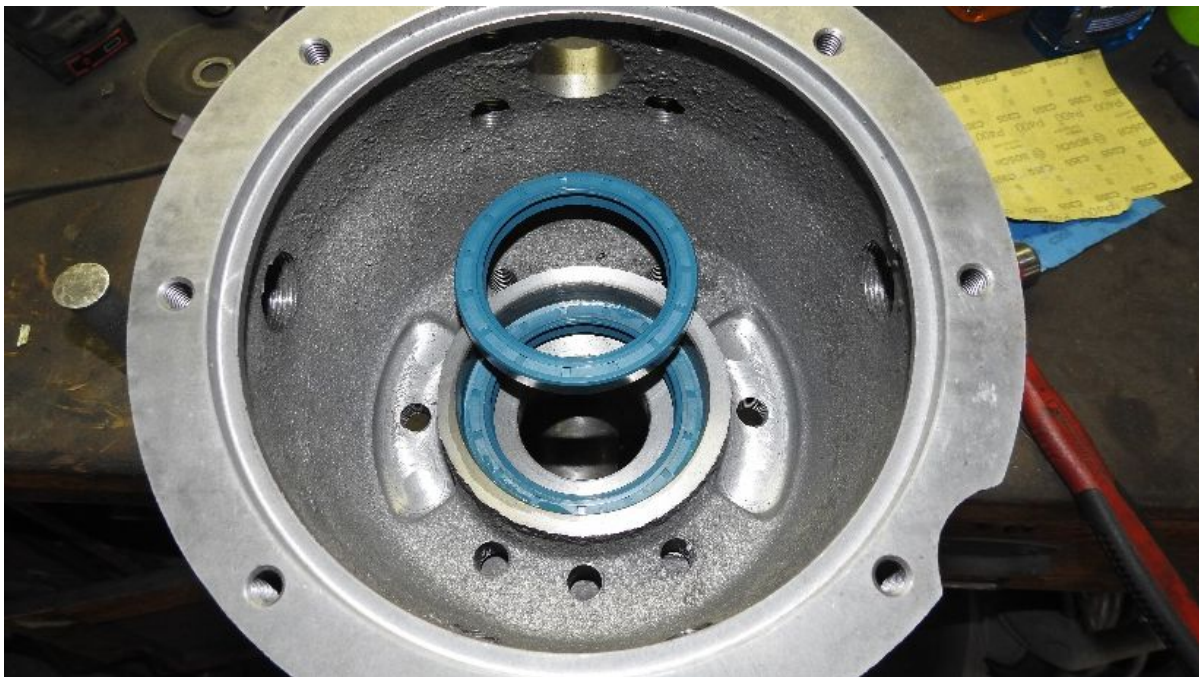
Remove all brake parts and the wheel bearings first.



Next remove the steering knuckle and pull the axle shaft.



Locate the snap ring and remove the CV joint. Sometimes the CV will not come off easily. In this case you have to cut the CV apart.



Mount and adjust the new steering knuckle according to the manufacturer's instructions of Mercedes Benz.



We provide some adjusting shims for correct adjustment.





The picture shows the lower side of the steering knuckle.

Important notice: Always use appropriate thread locker on all bolts!

Please call at **+49 4421 70691** or write a email at wolfgang@tibus-offroad.com if there is a problem or something you need to know.

Wenn Sie Probleme haben, rufen Sie uns an unter **04421 70691** oder schreiben eine Mail an wolfgang@tibus-offroad.com. Wir helfen Ihnen gern.

TIBUS

OFFROAD ENGINEERING

Tibus Offroad Ltd. & Co. KG
Roffhausener Landstr. 25
26419 Schortens

Tel.: +49 (0) 4421 70 69 1