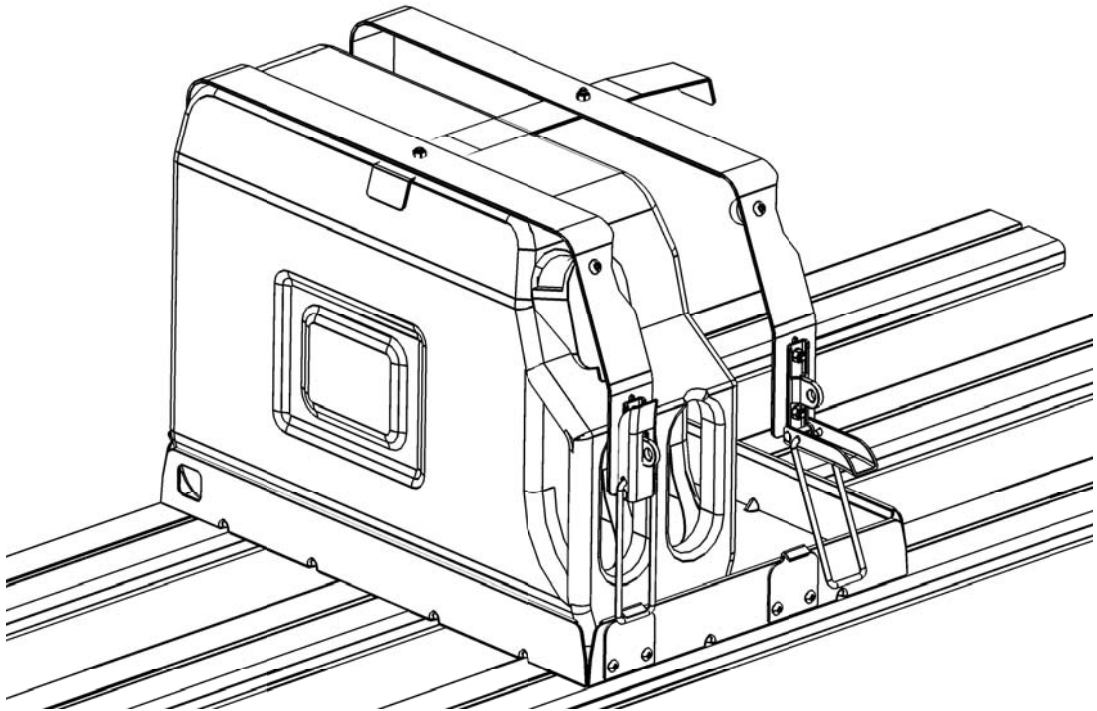




INSTALL TIME: 0.5 hours



1 GET ORGANIZED

you will need:

- a vehicle with a rack
- two 8 mm wrenches
- a 3 mm Allen wrench
- a 4 mm Allen wrench
- a 5 mm Allen wrench

...CONT'D

IMPORTANT WARNING!

IT IS CRITICAL THAT ALL FRONT RUNNER RACKS AND ACCESSORIES BE PROPERLY AND SECURELY ATTACHED TO YOUR VEHICLE. IMPROPER ATTACHMENT COULD RESULT IN AN AUTOMOBILE ACCIDENT, AND COULD CAUSE SERIOUS BODILY INJURY OR DEATH TO YOU OR TO OTHERS. YOU ARE RESPONSIBLE FOR SECURING THE RACKS AND ACCESSORIES TO YOUR CAR, CHECKING THE ATTACHMENTS PRIOR TO USE, AND PERIODICALLY INSPECTING THE PRODUCTS FOR ADJUSTMENT, WEAR, AND DAMAGE. THEREFORE, YOU MUST READ AND UNDERSTAND ALL OF THE INSTRUCTIONS AND CAUTIONS SUPPLIED WITH YOUR FRONT RUNNER PRODUCT PRIOR TO INSTALLATION OR USE. IF YOU DO NOT UNDERSTAND ALL OF THE INSTRUCTIONS AND CAUTIONS, OR IF YOU HAVE NO MECHANICAL EXPERIENCE AND ARE NOT THOROUGHLY FAMILIAR WITH THE INSTALLATION PROCEDURES, YOU SHOULD HAVE THE PRODUCT INSTALLED BY A PROFESSIONAL INSTALLER SUCH AS A QUALIFIED GARAGE OR AUTO BODY SHOP.

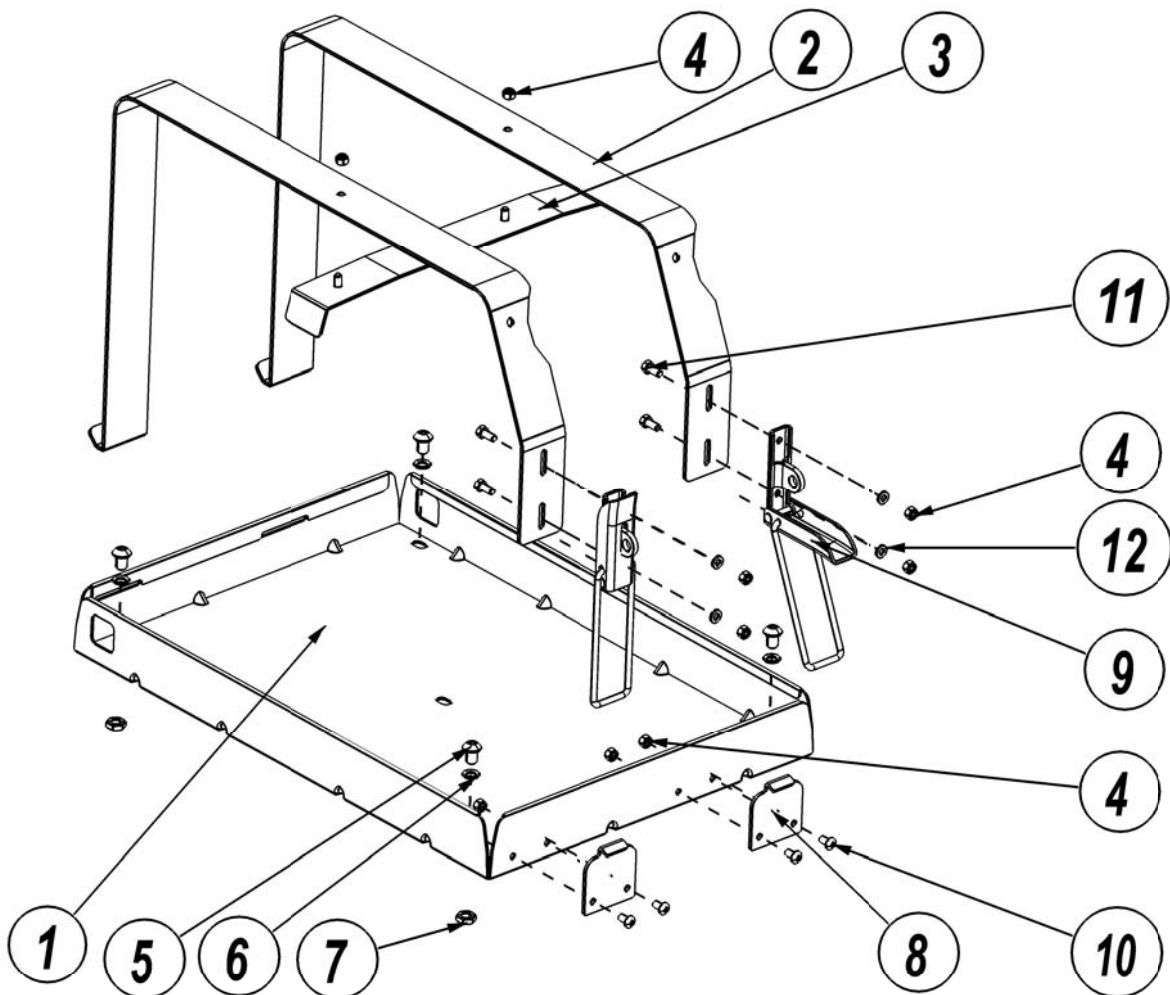
1

GET ORGANISED

...CONT'D

Here is what you are looking at:

1.	Item #	Quantity	DESCRIPTION
	1	1	JERRY HOLDER BASE
	2	2	STRAP 1
	3	1	STRAP 2
	4	10	HEX NUT, NYLOC; M5
	5	4	BUTTON HD SOCKET SCREW; M8x12
	6	4	SCHNORR WASHER
	7	4	HALF HEX NUT; M8
	8	2	LATCH KEEPER
	9	2	CATCH TOP
	10	4	BUTTON HD SOCKET SCREW; M5x10
	11	4	HEX HEAD BOLT; M5x12
	12	4	FLAT WASHER; M5



B)

Familiarize yourself with the parts and then step away from the work area and read through these instructions from beginning to end. Grab a cup of coffee and take a moment. A little prep now may save you a lot of time later

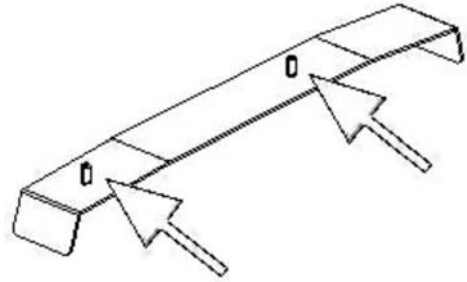
2

ASSEMBLE STRAPS

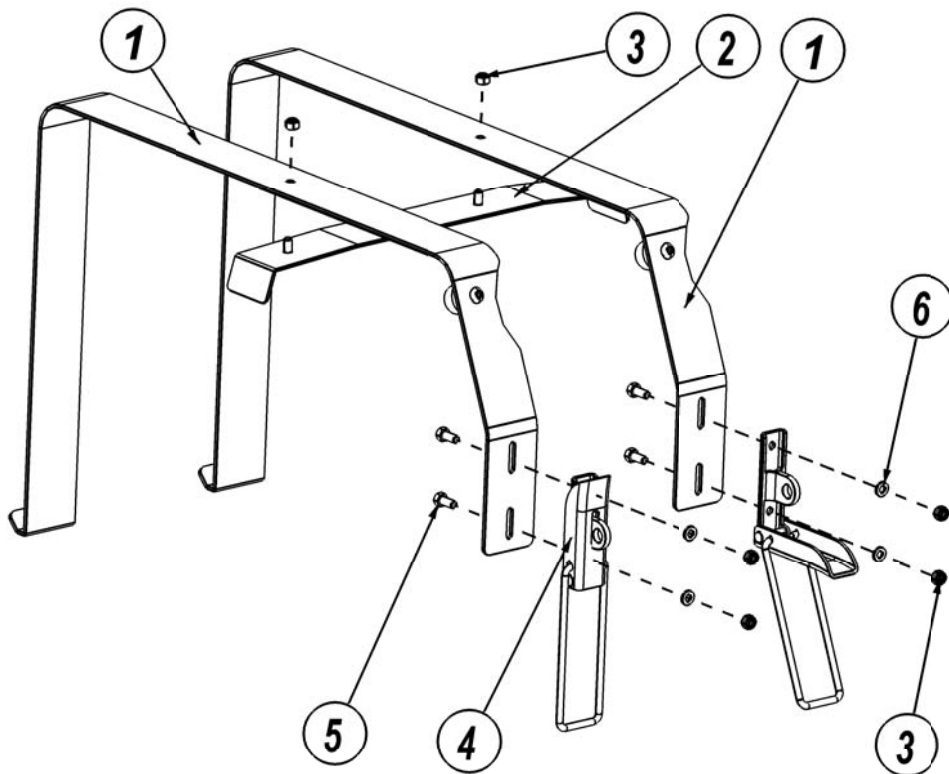
A)

Attach the straps together and the catches to the straps using the 8mm wrenches.

Item #	Quantity	DESCRIPTION
1	2	STRAP 1
2	1	STRAP 2
3	6	HEX NUT, NYLOC; M5
4	2	CATCH TOP
5	4	HEX HEAD BOLT; M5x12
6	4	FLAT WASHER; M5



NOTE the 2 bolts on strap 2 (Item 2) are offset to one side. Make sure the shorter offset is to the left when assembling. See above diagram



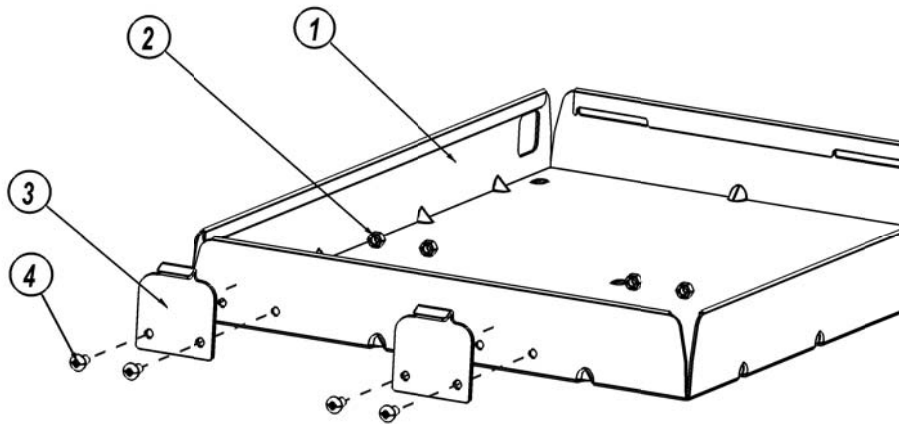
NOTE: Final adjustment of the latches must be done once the base is installed and the Jerry Can is inserted.

3

ASSEMBLE THE LATCH KEEPER

A)

Use the 3 mm Allen wrench and the 8mm wrench to fasten the nuts and bolts.



Item #	Quantity	DESCRIPTION
1	1	JERRY HOLDER BASE
2	4	HEX NUT, NYLOC; M5
3	2	LATCH KEEPER
4	4	BUTTON HD SOCKET SCREW; M5x10

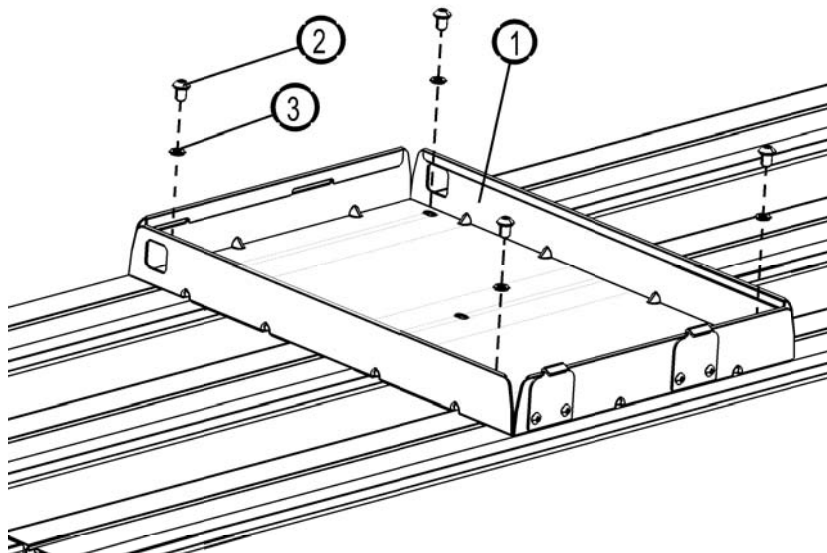
4

ASSEMBLE JERRY HOLDER TO RACK

A)

Slide the M8 flat nuts (Item 4) into the T-slot of the Front Runner rack and slide to the desired position. Orient the base so that the catches face towards the outside of the vehicle for easy access. Use the 5 mm Allen wrench to fasten the bolts.

Item #	Quantity	DESCRIPTION
1	1	JERRY HOLDER BASE
2	4	BUTTON HD SOCKET SCREW; M8x12
3	4	SCHNORR WASHER
4	4	HALF HEX NUT; M8



5

PLACE THE STRAPS ON THE BASE

A)

Inset the straps in the slot of the base and rotate them open.

B)

Insert the Jerry can and adjust catches such that the Jerry can is securely fastened.

6

CHECK FOR OTHER COOL ACCESSORIES

Now's the time to take a trip to your dealer or visit
www.FRONTRUNNER.CO.ZA

7

TAKE A TRIP

A)

After your first adventure, check the tension on all the bolts and screws and re-tighten where needed. You'll find a small amount of settling has happened.

B)

Go on many more adventures. Periodically check the bolts- it's always wise to double check your fasteners once in a while.

THE FINE PRINT- Always remember- you've raised the height of your vehicle- so use caution when entering parking structures and driving under low hanging obstacles.

For the safety of your rack system and your vehicle, please obey all traffic laws and adjust speed accordingly to the load being carried and the conditions of the road. Cargo will effect the vehicles handling.

→ **Modifying your vehicle involves some risks and may void certain aspects of your vehicle's warranty.**