



FRONT RUNNER

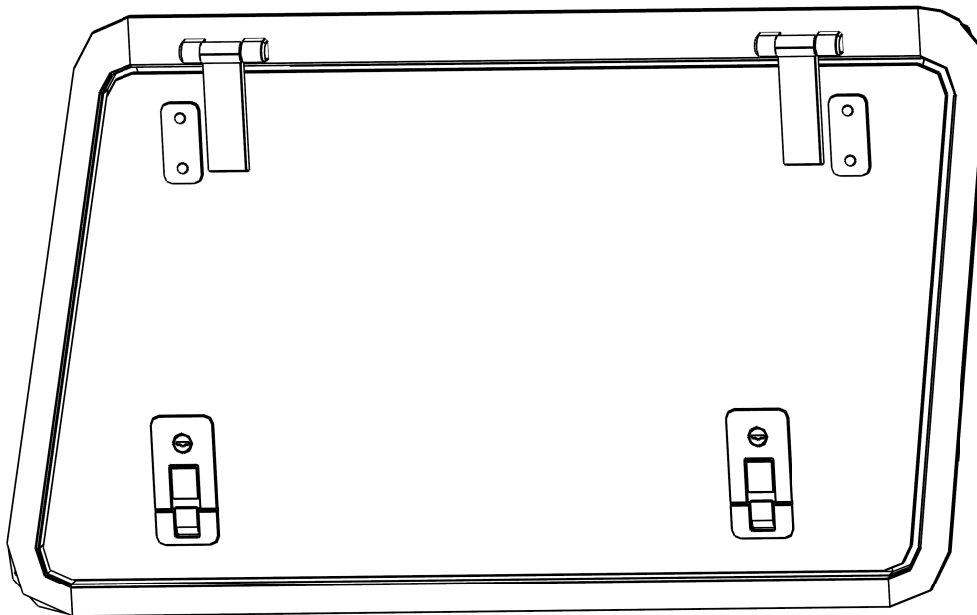
**MERCEDES-BENZ
GELÄNDEWAGEN
GULLWING WINDOW**

ENG

GWMG***



INSTALL TIME: 1 Hour



IMPORTANT WARNING!

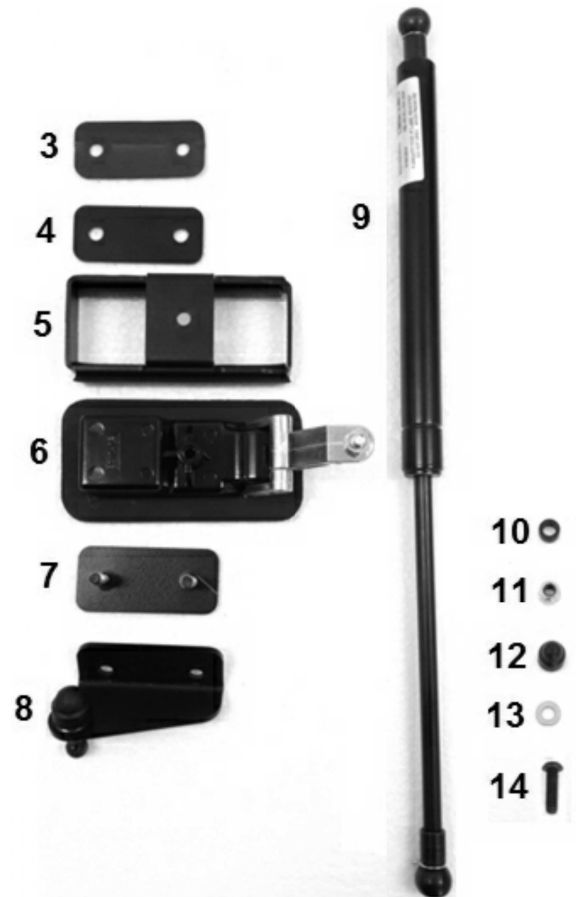
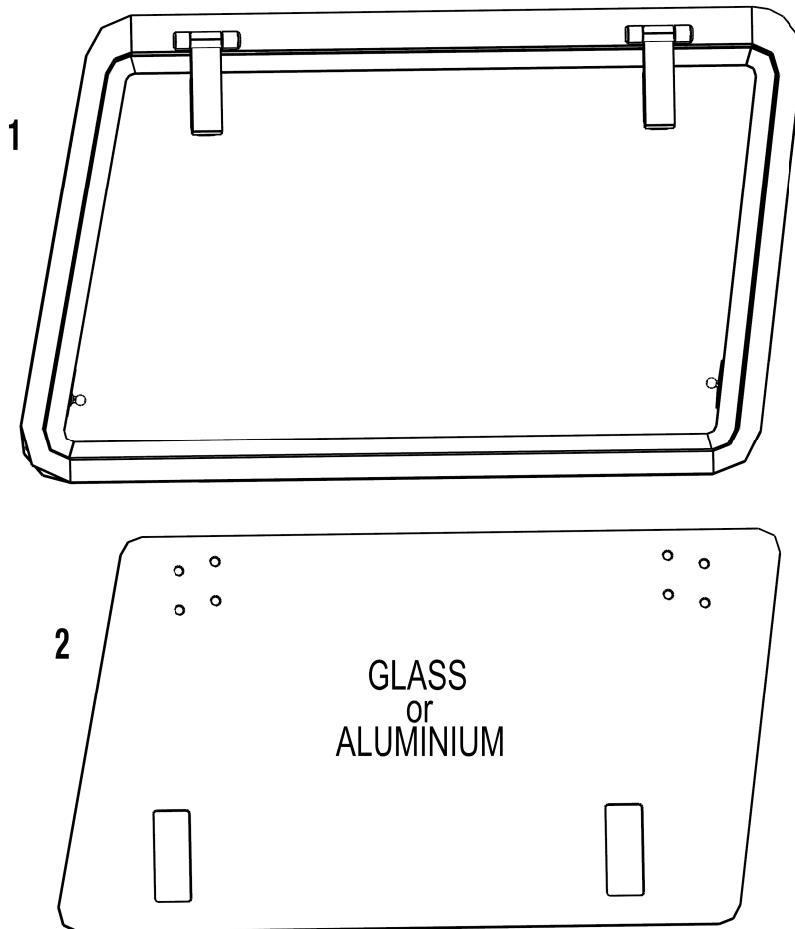
IT IS CRITICAL THAT ALL FRONT RUNNER PRODUCTS BE PROPERLY AND SECURELY ASSEMBLED AND ATTACHED TO YOUR VEHICLE. IMPROPER ATTACHMENT COULD RESULT IN AN AUTOMOBILE ACCIDENT, AND COULD CAUSE SERIOUS BODILY INJURY OR DEATH TO YOU OR TO OTHERS. YOU ARE RESPONSIBLE FOR ASSEMBLING AND SECURING ALL FRONT RUNNER PRODUCTS TO YOUR VEHICLE, CHECKING THE ATTACHMENTS PRIOR TO USE, AND PERIODICALLY INSPECTING THE PRODUCTS FOR ADJUSTMENT, WEAR, AND DAMAGE. THEREFORE, YOU MUST READ AND UNDERSTAND ALL OF THE INSTRUCTIONS AND CAUTIONS SUPPLIED WITH YOUR FRONT RUNNER PRODUCT PRIOR TO INSTALLATION OR USE. IF YOU DO NOT UNDERSTAND ALL OF THE INSTRUCTIONS AND CAUTIONS, OR IF YOU HAVE NO MECHANICAL EXPERIENCE AND ARE NOT THOROUGHLY FAMILIAR WITH THE INSTALLATION PROCEDURES, YOU SHOULD HAVE THE PRODUCT INSTALLED BY A PROFESSIONAL INSTALLER OR OTHER QUALIFIED PERSONNEL.

1 GET ORGANIZED...

Item #	Quantity	Description
1	1	GULLWING FRAME ASSEMBLY
2	1	GLASS OR ALLUMINIUM WINDOW
3	2	HINGE PLATE
4	8	FOAM PAD
5	2	LOCK MOUNTING BRACKET
6	2	LOCK
7	2	STUD PLATE
8	2	GAS STRUT MOUNT - 1 LEFT, 1 RIGHT
9	2	GAS STRUT
10	4	PLASTIC BUSH
11	8	M6 NYLOC NUT
12	8	M6 NUT CAP
13	10	M6 FLAT WASHER
14	2	M6 x 20 BUTTON HEAD BOLT

You will need:

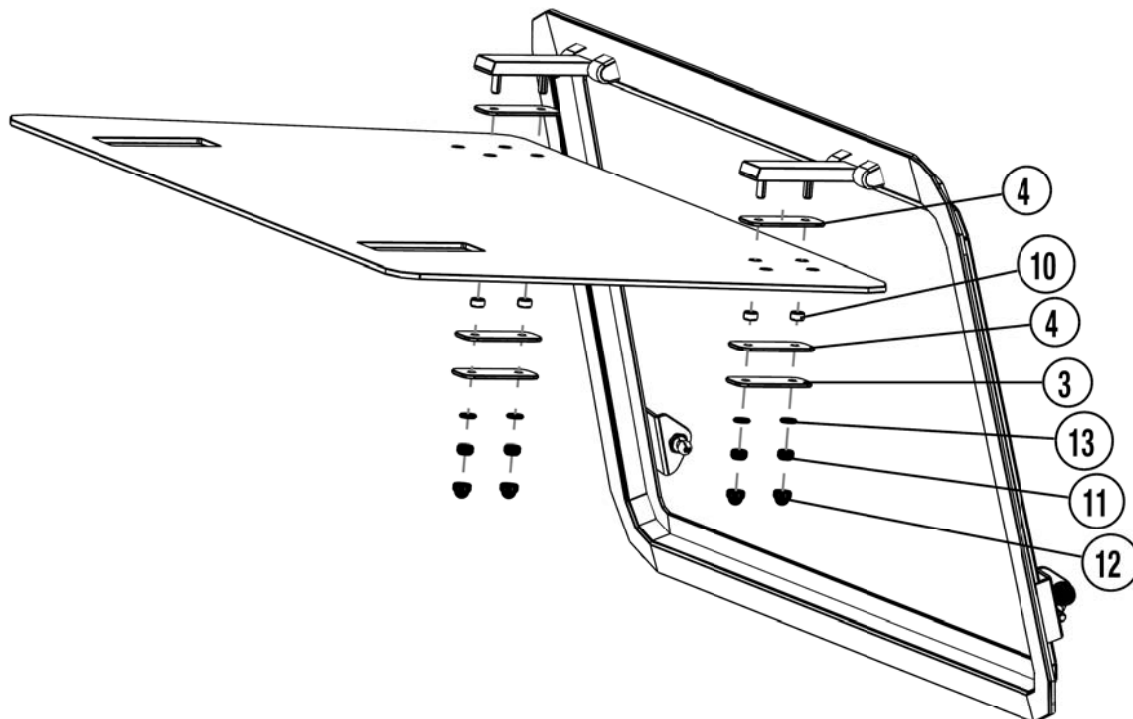
- 10 mm Flat & Socket Wrench
- 4 mm Flat or Socket Wrench



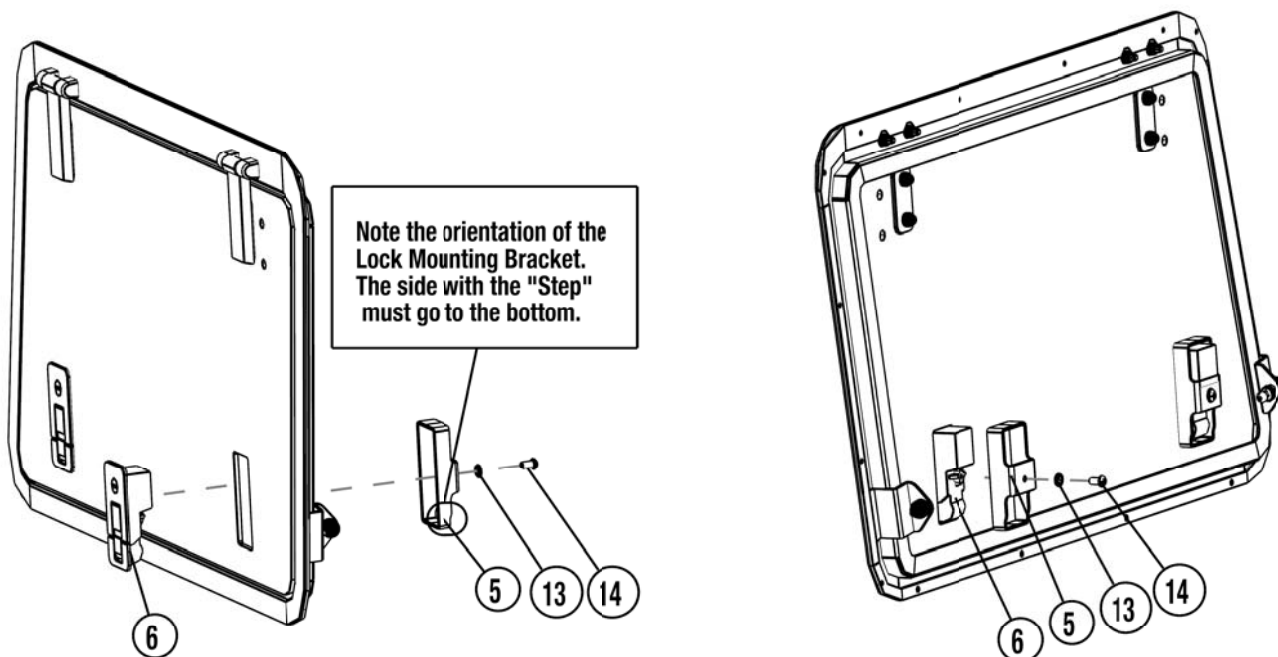
(A) Familiarize yourself with the parts and then step away from the work area and read through these instructions from beginning to end. Take a moment as little prep now may save you a lot of time later.

2 ASSEMBLE GULLWING DOOR

- (A) Referring to the Parts List on Page 2 and the Exploded View below, assemble the Glass or Aluminium Window (Item 2) to the Frame (Item 1) using the Items and indicated.



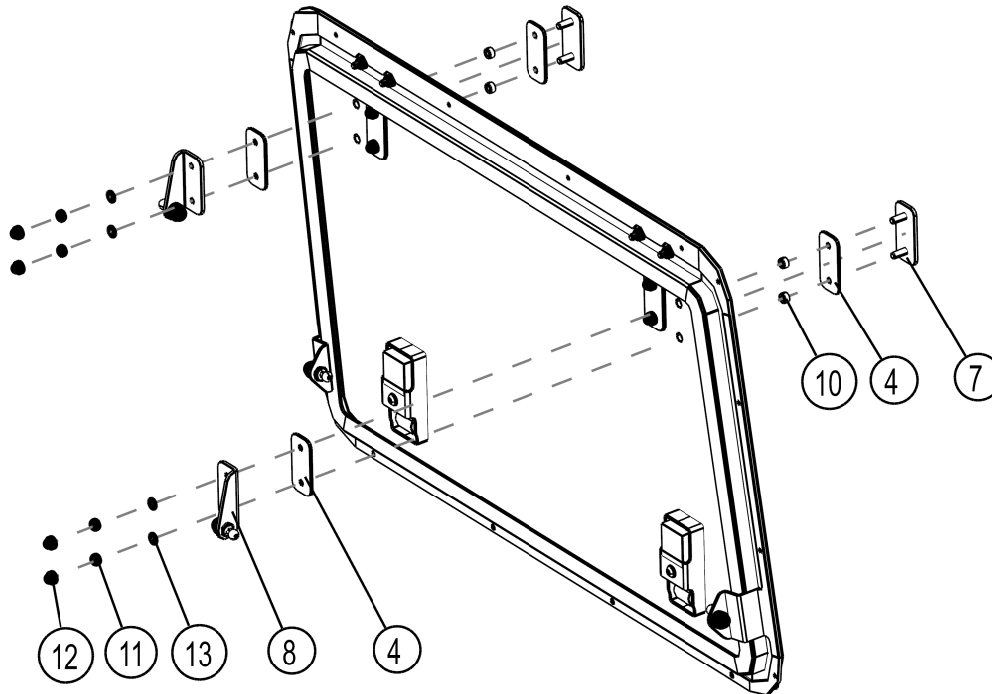
- (B) With reference to Page 2 and the Exploded View below, Fit the Locks (Item 6) to the Window. You have received a silver mounting bracket with your lock kit. This bracket must be discarded and replaced by the black Lock Mounting Bracket (Item 5).



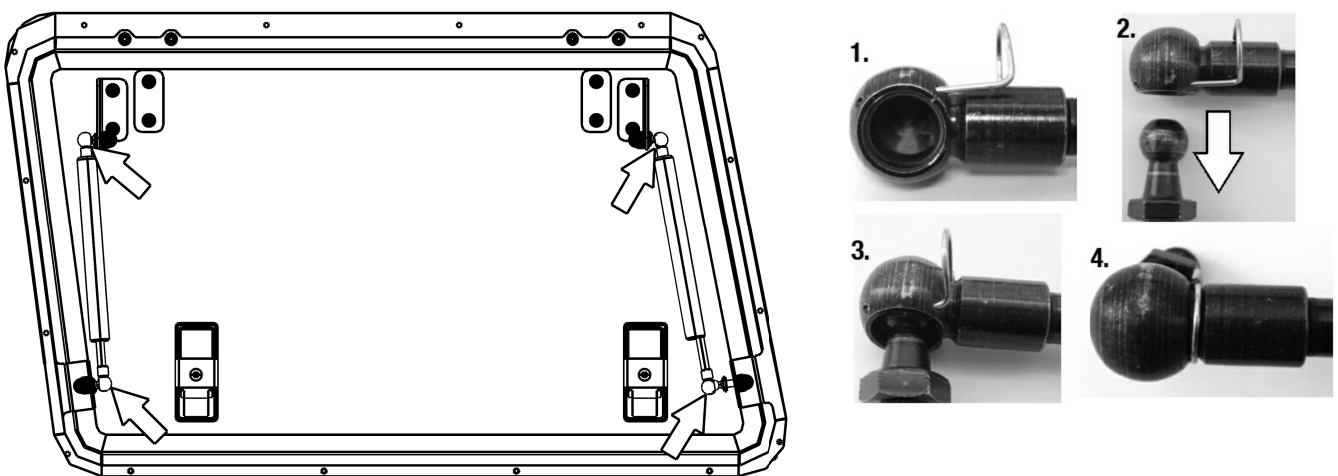
2

ASSEMBLE GULLWING DOOR CONT...

(C) Referring to Page 2 again and the Exploded View below, fit the Gas Strut Mounts (Item 8) to the Window.



(D) Open the Gullwing Window and attach the two Gas Struts (Item 9) to the Window and Frame assemblies by removing the retaining clip from the end of the Strut, clipping the end of the Strut over the Ball Joint and refitting the retaining clip as shown.



3 INSTALL GULLWING DOOR

- (A) With the help of a friend remove the original rear side window. One of you will need to be on the outside of the vehicle to catch and support the window as the other pushes the window out from the inside. This is done by leaning in through the rear door of the vehicle, bracing yourself against the inside of the vehicle opposite to the window you wish to remove and then pushing on the top rear corner of the window being removed as shown below.



- (B) Remove the rubber seal from the original window and fit it to your Gullwing Window as shown. Ensure that the flat side of the rubber is facing the outside of the Gullwing Window.



3 INSTALL GULLWING DOOR CONT...

- (C) Starting at the top of the Gullwing Door, insert the String supplied into the rubber extrusion as shown. Go all the way around the Gullwing Window and cross the String over at the bottom as demonstrated. The door is now ready to be fitted.



- (D) Place the Gullwing Door into position, making sure the the String is to the inside of the vehicle as shown.



3 INSTALL GULLWING DOOR CONT...

- (E) With one person on the outside of the vehicle pushing the Gullwing Window down and in, have another person on the inside of the vehicle pulling the String out from inside the rubber, thereby feeding the rubber over the vehicle's body, pulling the Gullwing Door into position. The person on the inside of the vehicle will need to instruct the person on the outside of the vehicle where to push and apply pressure as the string is removed.

Once the String is fully removed ensure that the Gullwing Door is seated and sealed properly. If it has not seated correctly the process may need to be repeated should a little pushing and manipulation not work.



- (F) Using the nut and bolt system as indicated by the arrow, adjust the door lock tension on the frame to align the door appropriately.



- (G) Congratulations, you have completed your installation. Take a step back and admire your work. Good Job!

4 INSTALL OTHER VEHICLE AND RACK ACCESSORIES

- (A) Now's the time to visit your favourite Front Runner dealer in person or online.