



FRONT RUNNER

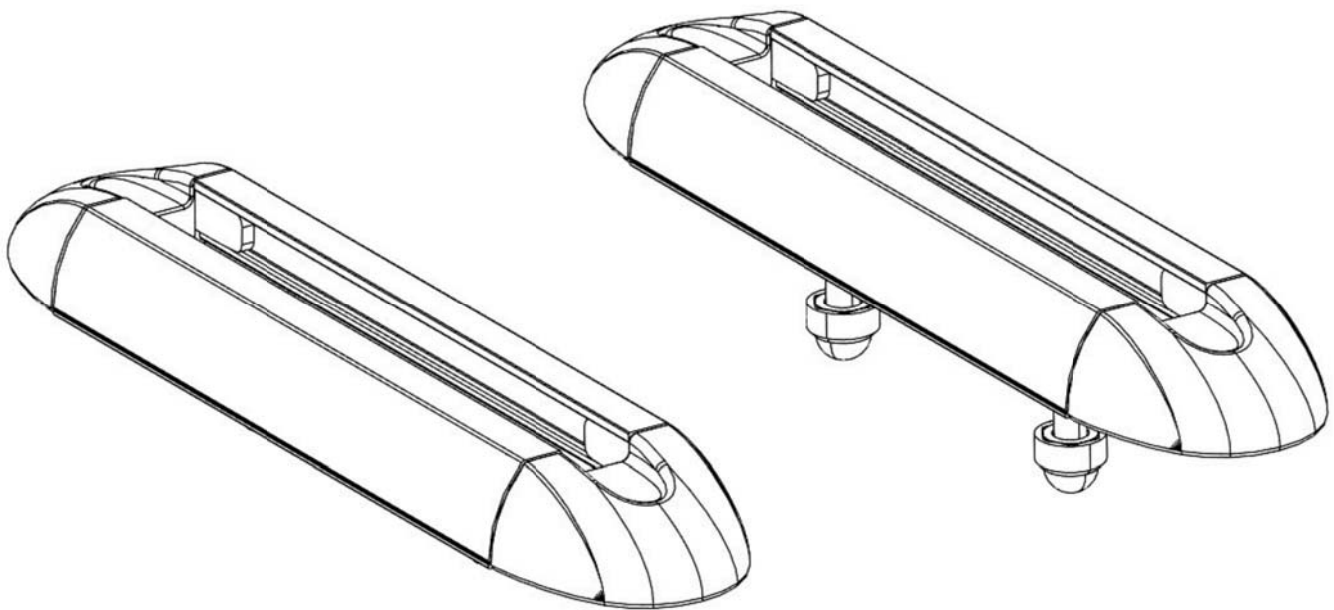
**UNIVERSAL TRACK SYSTEM
FOR LOAD BARS**

ENG

TRCA008



INSTALL TIME: 1 Hour



IMPORTANT WARNING!

IT IS CRITICAL THAT ALL FRONT RUNNER PRODUCTS BE PROPERLY AND SECURELY ASSEMBLED AND ATTACHED TO YOUR VEHICLE. IMPROPER ATTACHMENT COULD RESULT IN AN AUTOMOBILE ACCIDENT, AND COULD CAUSE SERIOUS BODILY INJURY OR DEATH TO YOU OR TO OTHERS. YOU ARE RESPONSIBLE FOR ASSEMBLING AND SECURING ALL FRONT RUNNER PRODUCTS TO YOUR VEHICLE, CHECKING THE ATTACHMENTS PRIOR TO USE, AND PERIODICALLY INSPECTING THE PRODUCTS FOR ADJUSTMENT, WEAR, AND DAMAGE. THEREFORE, YOU MUST READ AND UNDERSTAND ALL OF THE INSTRUCTIONS AND CAUTIONS SUPPLIED WITH YOUR FRONT RUNNER PRODUCT PRIOR TO INSTALLATION OR USE. IF YOU DO NOT UNDERSTAND ALL OF THE INSTRUCTIONS AND CAUTIONS, OR IF YOU HAVE NO MECHANICAL EXPERIENCE AND ARE NOT THOROUGHLY FAMILIAR WITH THE INSTALLATION PROCEDURES, YOU SHOULD HAVE THE PRODUCT INSTALLED BY A PROFESSIONAL INSTALLER OR OTHER QUALIFIED PERSONNEL.

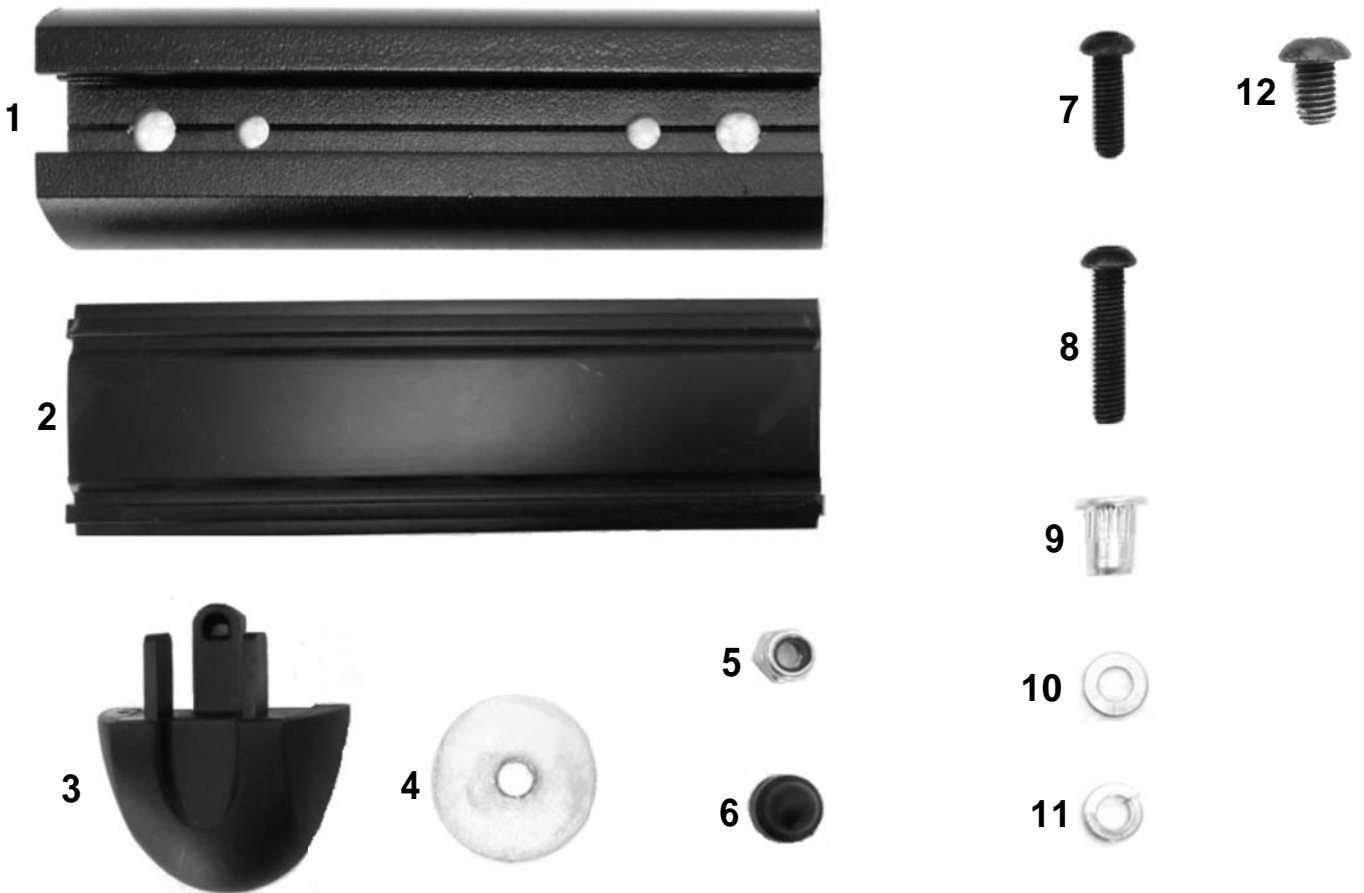
1 GET ORGANIZED

Here is what you are looking at:

Item #	Quantity	Description
1	2	TRACK
2	2	PLASTIC STRIP
3	4	END CAP
4	4	M6 x 30 FLAT WASHER
5	4	M6 NYLOC NUT
6	4	M6 NUT CAP
7	4	M6 x 20 BUTTON HEAD BOLT
8	4	M6 x 30 BUTTON HEAD BOLT
9	4	M6 RIVNUT
10	4	M6 FLAT WASHER
11	4	M6 SPRING WASHER
12	4	M8 x 12 Button Head Bolt

You will need:

- 4 mm Hex Key
- 6.5 mm Drill Bit
- Drill Machine
- Marking Pen
- 10 mm Flat or Socket Wrench
- Silicone
- 9 mm Drill Bit (Rivnut fitment only)
- Rivnut Tool (Rivnut fitment only)



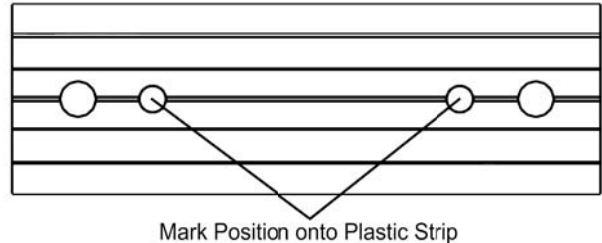
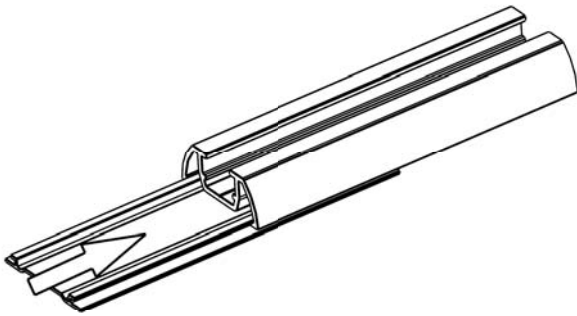
(A) Familiarize yourself with the parts and then step away from the work area and read through these instructions from beginning to end. Take a moment as a little prep now may save you a lot of time later.



If you are fitting the Load Bar Tracks to your vehicles' roof, refer to Section 2.
 If you are fitting the Load Bar Tracks to a Canopy, refer to Section 3.
 If you wish to remove your Load Bars, refer to Section 4.

2 INSTALL TRACK TO VEHICLES' ROOF

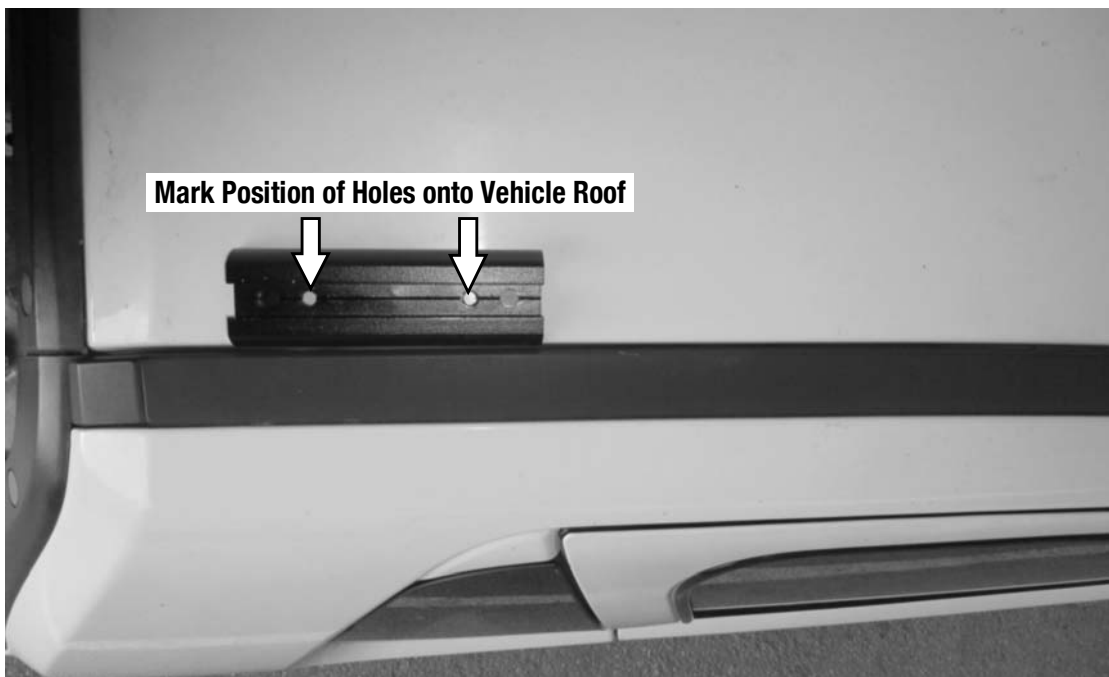
- (A) Starting at one end of the Track (Item 1), slide the Plastic Strip (Item 2) all the way into the Track until the edge of the Plastic Strip aligns with the edge of the Track. Mark the position of the two 6.5 mm holes in the Track onto the Plastic Strip. Slide the Plastic Strip out and drill a 6.5 mm hole in the Plastic Strip on each of your markings. Slide the Plastic Strip back into position.



- (B) Place the Track in a suitable position on top of the vehicles' roof. It is advised to position the Track as close to the edge of the vehicle's roof as possible and as level as possible. Check that the chosen area is strong enough to support weight without damaging the vehicles' roof when carrying a load. Ensure that you allow for 35 mm of additional space at each end of the Track for the End Cap (Item 3).

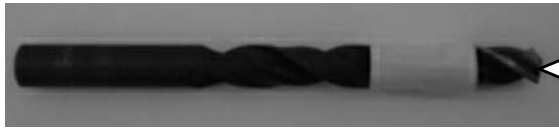
Once you are happy with the position of the Track, take measurements so that you are able to position the second section of Track on the opposite side of the vehicles' roof. Mark the Position of the 6.5 mm holes onto the vehicles' roof.

Repeat this Step for each Load Bar to be fitted to the vehicle i.e. for two Load Bars there must be four sections or two pairs of Track.



2 INSTALL TRACK TO VEHICLES' ROOF CONT...

- (C) Before drilling the holes in the roof, you need to do a bit of prep. Take both the 6.5 & 9 mm drill bits. Using some insulation tape, wrap a band of tape around the drill bit to act as a stopper to prevent you from drilling too deep as there are airbags located below where you will be drilling.



10 mm from tip of drill bit to start of tape.

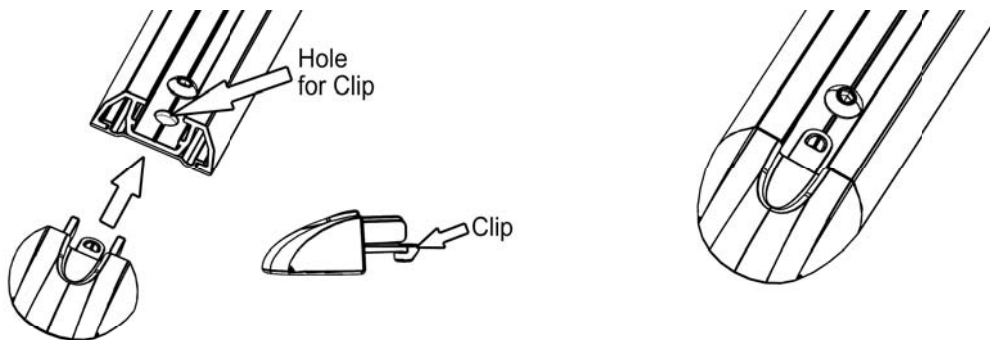
- (D) Once you are happy with the positions and markings of all the sections of Track from Step 2B, remove them and drill a 6.5 mm Hole on each of your markings. Change to the 9 mm drill bit and open all of the 6.5 mm holes in the vehicles' roof to 9mm.

- (E) Using a Rivnut Tool, insert and crimp a M6 Rivnut (Item 9) into each of the holes 9 mm drilled in Step 2D

- (F) Secure the sections of Track to the vehicles roof using the M6 Spring Washers and M6 x 20 Button Head Bolts (Items 7 & 11)

- (G) Referring to the Fitting Instruction (Document FASSUNI) received with your Feet, you can either slide two Stud Plates into each Track or assemble and slide the appropriate Foot into each of the Tracks.

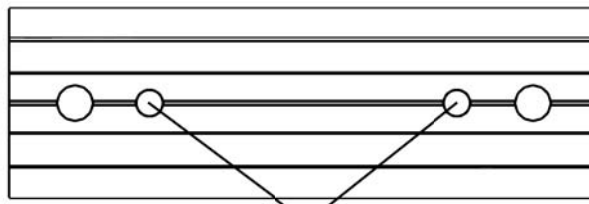
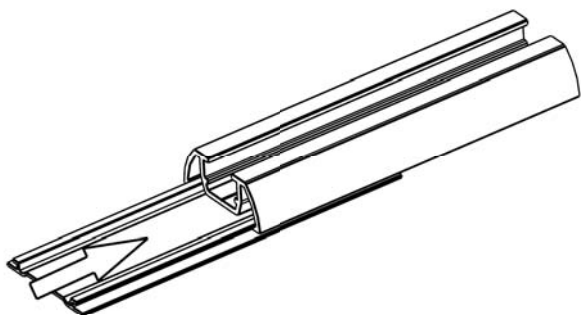
- (H) Once you have inserted the required Stud Plates or Feet into the Tracks, slide the End Caps (Item 3) into either end of the Track, clipping the clip on the End Cap into the hole in the Track as indicated.



- (E) Congratulations, you have completed your installation. Take a step back and admire your work. Good Job!

3 INSTALL TRACKS ONTO CANOPY

- (A) Starting at one end of the Track (Item 1), slide the Plastic Strip (Item 2) all the way into the Track until the edge of the Plastic Strip aligns with the edge of the Track. Mark the position of the two 6.5 mm holes in the Track onto the Plastic Strip. Slide the Plastic Strip out and drill a 6.5 mm hole in the Plastic Strip on each of your markings. Slide the Plastic Strip back into position.



Mark Position onto Plastic Strip



Certain steel canopies come with a inner roof lining. Should you wish not to drill and bolt through the entire roof and roof lining, you will use the M6 Rivnuts (Item 8) supplied for the installation and a little preparation will be necessary. Take both the 6 mm and 9 mm drill bits and using a suitable tape, wrap a band of tape around the drill bit to act as a stopper to prevent you from drilling to deep and into the roof lining.



5 mm from tip of drill bit to start of tape.

- (B) Place the Tracks onto the Canopy in the desired location. Check that chosen position is suitable for mounting as canopy designs will vary from manufacturer to manufacturer. Once you are happy with the location of Load Bar Tracks, mark the position of all the 6.5 mm holes in the Track onto the canopy.

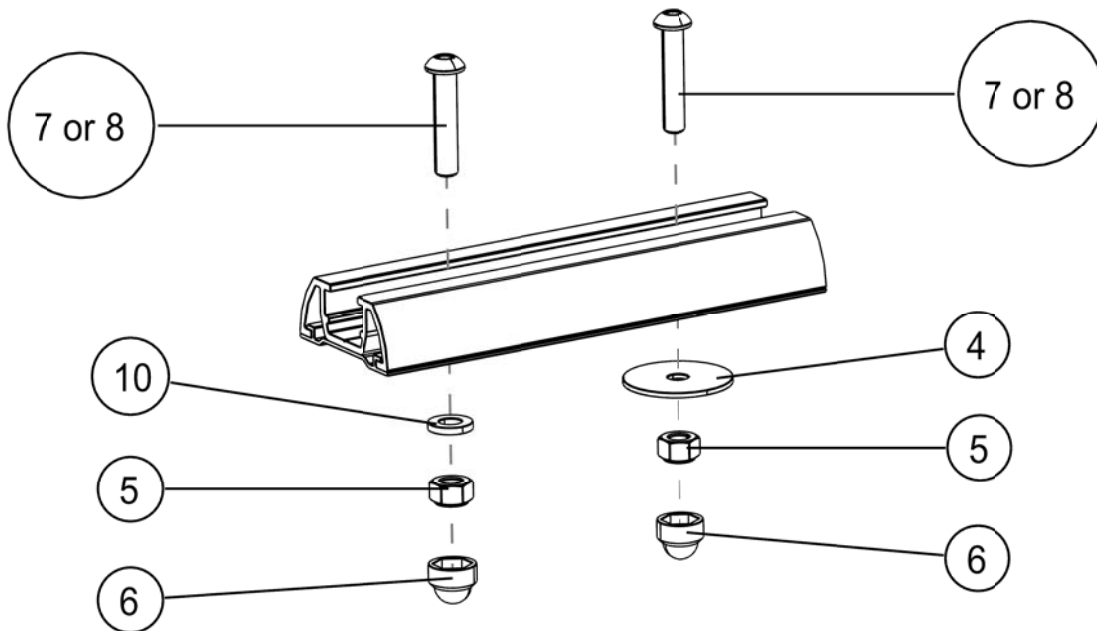
Remove the Tracks and drill a 6.5 mm on each or your markings.

If you have the steel canopy with the roof lining and wish to install your Tracks using Rivnuts, you will need to change drill bits from 6.5 mm to 9 mm and re-drill the 6.5 mm holes to 9 mm. Once all the holes are drilled to 9 mm, insert and crimp a Rivnut in each hole. The Tracks can now be secured in position using the M6 Spring Washers and M6 x 20 Button Head Bolts (Items 7 & 11). Once the Tracks are secured, skip ahead to Step 2E.

- (C) Place a suitable amount of silicone over and around each of the holes in the canopy. Place the Tracks back onto the canopy, lining up the holes in the Tracks with the holes in the canopy.

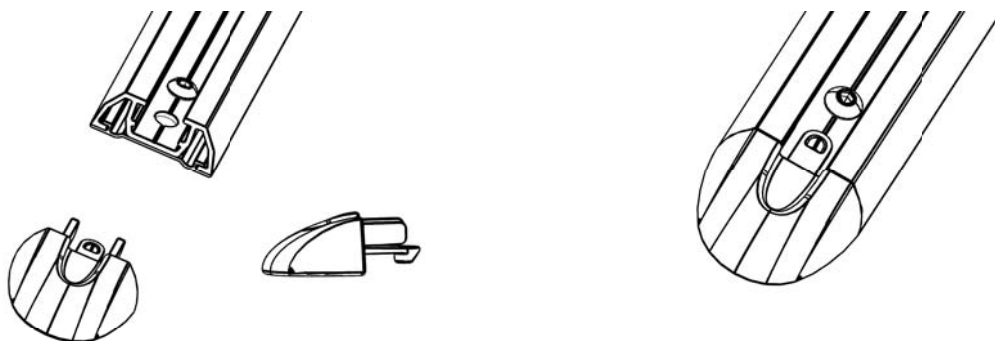
3 INSTALL TRACKS ONTO CANOPY CONT...

- (D) Referring to Page 2 and the two different mounting options below as a guide, select the best suited method and combination of fasteners and secure the Tracks to the canopy.



- (E) Referring to the Fitting Instruction (Document FASSUNI) received with your Feet, you can either slide two Stud Plates into each Track or assemble and slide the appropriate Foot into each of the Tracks.

- (F) Once you have inserted the required Stud Plates or Feet into the Tracks, slide the End Caps (Item 3) into either end of the Track, clipping the clip on the End Cap into the hole in the Track as indicated.

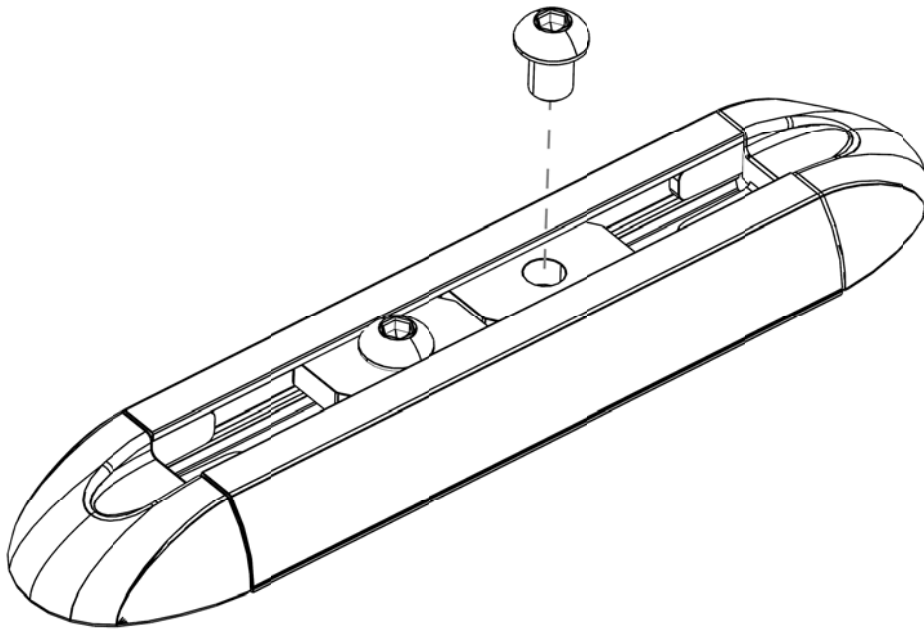


- (G) Congratulations, you have completed your installation. Take a step back and admire your work. Good Job!

4 REMOVING YOUR LOAD BARS

- (A) Loosen the two M8 Hex Bolts either end used to secure the Load Bar & Foot Assemblies to the Load Bar Tracks. Store the fasteners with the Load Bar Assemblies in a safe place.

- (B) Secure the two Stud Plates in position using the M8 x 12 Button Head Bolts (Item 12) supplied. This is done to prevent the Stud Plates from sliding around and making a noise while driving without Load Bars.



5 INSTALL OTHER VEHICLE AND RACK ACCESSORIES

- (A) Now's the time to visit your favorite Front Runner dealer in person or online.