



INSTALLATION INSTRUCTIONS

MITTER XTREME INTENSITY LED PRIME XTREME

Installation Instructions & User's Manual



VISION X



About The Xmitter Prime Extreme:



FEATURES

1. High performance 5 watt LED.
2. Xtreme output in compact housing.
3. PWM (Pulse With Modulation) integrated dimming circuitry.

XMITTER PRIME XTREME SPECIFICATIONS

1. Warranty : Extended
2. Amp Draw : 2.5A - 37.5A @ 12V DC
3. Input Voltage : 9-32V DC
4. Beam Patterns : 10°, 40°, Mixed
5. LED Lifespan : 50,000 Hours

PREPARATION

1. We recommend completely reading instructions before installing.
2. Consult your local state regulatory agency regarding the use of LED lighting.
3. The placement of LED lighting should not restrict airflow to the radiator, or block head lamps, turn signals, or parking lights.

MAINTENANCE

1. All Vision X models have been designed for maintenance free use. In the case an LED lamp or other part replacement is needed please contact your authorized service center.

XMITTER PRIME XTREME



1 PX




LIGHT Qty: 1

2 Single Light Harness




WIRING Qty: 1

3 Mounting Feet



PART (F1) Table 1

4 Allen Key (6mm)



PART (A1) Qty: 1

Table 1:

MOUNTING FEET BY NUMBER OF LEDS

LED	6LED	12LED	18LED	30LED	36LED	54LED	72LED	90LED
# of Feet	1	2	2	3	4	5	6	6

WARNINGS

As with many other high-tech products, this VISION X LED requires a bit of attention before you can use it. Please read the accompanying information carefully first.

1. Don't stare directly into the light or shine directly into the eyes of another person as this may cause temporary loss of vision.
2. Never disassemble the products, as all parts must be factory serviced to insure proper operation.
3. Don't interchange the parts inside this light with other products.
4. The LED light is to be mounted on the vehicle only in a vertical, bottom mounting, or in a suspended position.
5. After turning on the light, the body might be hot enough to warrant a burn risk. Be careful when you touch the body after turning on the light for a long period of time.
6. Use the supplied wire harness for electrical installation.
7. The LED light must not adversely affect the performance of low beam, high beam, engine cooling or the driver's view.



WIRING INSTALLATION INSTRUCTION

1. Find a suitable place to mount Relay Part (R1) leaving enough room for Power & Ground wires Part (W1 & W2) to reach the battery & the Deutsch connector Part (C1) to reach the Light. Mount Relay.
2. Run Power wire (W1) & Ground wire (W2) to the battery. Connect the Power wire (W1) to the Positive (+) battery terminal and connect the Ground wire (W2) to the Negative (-) battery terminal.
3. Run the Deutsch connector wire (C1) to the light and plug in.
4. Disconnect the Switch Part (S1) at the white Plug Part (P1) and run the wire through the vehicles fire wall to desired mounting location inside the Cab [using a factory rubber or plastic grommet is suggested].
5. Drill the hole to the required size for the Switch (S1) and mount to desired position.
6. Reconnect the Switch (S1) to the Harness.
7. Test Light.

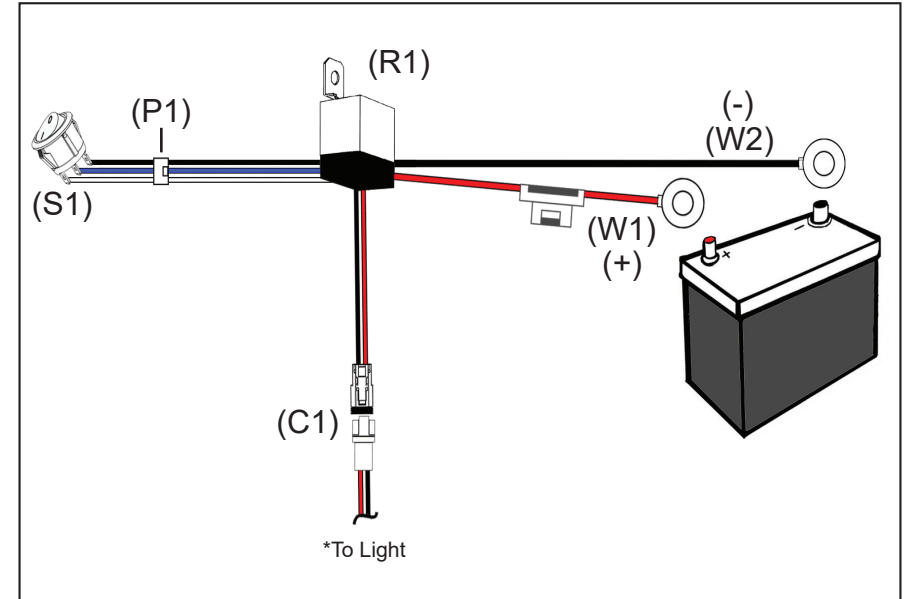
DIMMING FUNCTION

Your light is capable of dimming through the Prime Drive wire on the light's plug. To achieve this requires our authorized accessories, the XIL-PDIMMER, or XIL-PDIMMERBUTTON. **Do Not** connect the Prime Drive wire without authorized accessories as this will damage the electronics.

MANUFACTURER RECOMMENDATION

For those unfamiliar with electrical wiring on vehicles, Vision X recommends that all LED Lighting products are professionally installed.

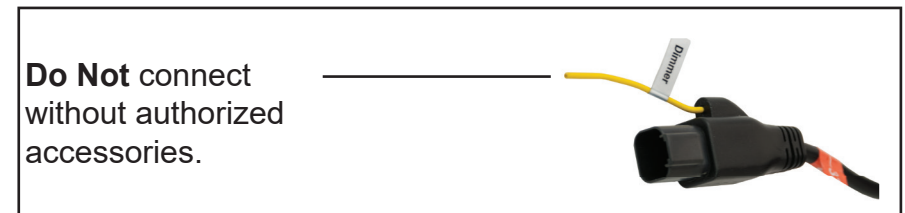
WIRING DIAGRAM:



COMPONENTS KEY

- Part (R1) Relay
- Part (W1) Power Wire for Relay Coil
 - a. 9-32V DC Positive (+) Input Wire
- Part (W2) Ground Wire for Relay Coil
 - a. 9-32V DC Negative (-) Input Wire
- Parts (C1) Deutsch Connectors for Lights
 - a. Attached to 9-32V DC Positive (+) Power Wires
- Part (S1) Switch
- Part (P1) Switch Plug

DIMMER WIRE:

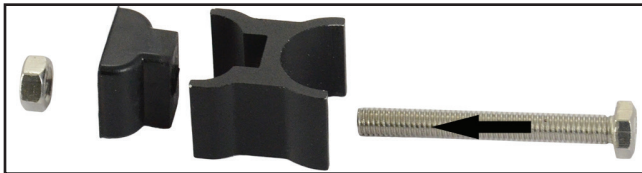


TIP: For complete application guide see website

WARNING: Bolts, Nuts, and Washers are Stainless Steel. DO NOT USE Pneumatic or Electric Tools to Tighten and Loosen. The Hardware Will Permanently Lock Together.

MOUNTING INSTALLATION INSTRUCTION FOR FEET

1. Start by setting the light bar in the location that you plan to mount it in. Mark each end of the light bar and measure the length.
2. Depending on the length of your light bar, you will have a certain number of mounting feet Part (F1) included in the packaging. These feet fit into grooves on the back of the light bar. [See Figure 1]
3. Place each mounting foot (F1) bolt head first into light bar rail grooves on the back of the light. [See Figure 1]
4. Mark the location of each mounting feet on your vehicle. Drill holes for each. The feet can slide right to left inside the grooves, letting you fine tune the location.
5. Remove the nut from the feet bolt, and place the light bar onto your vehicle, line up the bolts with the previously drilled holes. (See Figure 2)
6. Securely tighten the nut to the mounting feet bolt.



Disassembled Foot Mount, included with every Vision X LED Light Bar. Comes assembled.

LIGHT ANGLE ADJUSTMENT

1. Use the provided 6mm Allen wrench Part (A1) to loosen both Allen bolts on each side the light bar. Once desired angle is achieved, tighten the bolts.[See Figure 3]
2. A good reference point is at 20 ft; the top of the beam should be 3" down from center of light (with the light bar at dead center). Tighten light and enjoy.

INSTALLATION IMAGES

Fig. 1

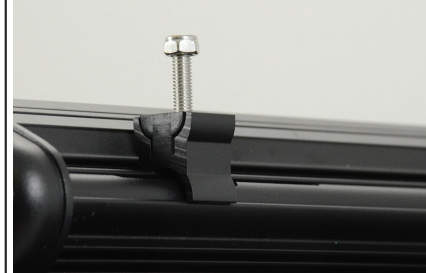


Fig. 2

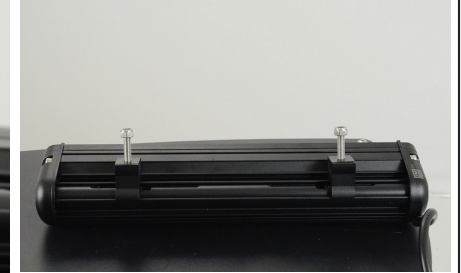


Fig. 3



TIP: Vision X recommends the use of liquid thread-locker, or Loctite, to ensure that every bolt and nut are safely secured.



TIP: For complete application guide see website



You May Also Be Interested In:



Part # - 9890975
 Item # - XIL-OEH0713JK
 Jeep JK Vehicle Specific Hood Mount Bracket
 (visit www.visionxusa.com for a full list of vehicle specific products)



CLAMP TUBE MOUNT
 (0.75"-3.0" Diameter Available)



Part # - 4009257
 Item # - XIL-PDIMMER
 Dial Knob Dimmer to Adjust the Light Output



Part # - 4009264
 Item # - XIL-PDIMMERBUTTON
 Push Button Dimmer Switch Between 50% & 100% Brightness



Part # - 9888811
 Item # - XIL-LPECM
 Xmitter Lo Pro Prime Xtreme Series Light Bar End Cap Mount Bolt Set



Part # - 4000308
 Item # - XIL-LICENSEP
 License Plate Bracket for Lights up to 20"



Part # - 9892313
 Item # - XIL-WINCH6
 Light Bar Winch Fairlead 6" Bracket
 (Available in 10")



PCV COVERS
 Black & Amber Snap on Light Bar Covers